

Shavehead Lake

NEWSLETTER

MAY 2023



Who is Who?

There are two lake associations on Shavehead. The Shavehead Lake Association, (SLA) uses dues to fund items related to lake health, boating safety, water quality, community outreach, and all social events mentioned in this newsletter including the Poker Run. The Shavehead Lake Peninsula Association (SLPA) uses its funds primarily to address land issues relating to the peninsula owners specifically, such as security concerns and select peninsula social events. If you live on the peninsula, it is beneficial to belong to both associations as our concentrations are different.

Welcome Summer!



For most lake people, the best time of the year has arrived! The SLA has been busy this Winter planning new events and researching ways to maintain the healthy, special place that is Shavehead Lake. Hopefully in the coming weeks you will enjoy connecting with neighbors at some of the events such as the Pooch Parade, Music on the Lake and Kids Carnival. We are looking for volunteers for most events listed on your calendar so please email us at Shaveheadlakeassociation@gmail.com or contact a board member to get involved.

Memorial Day

Memorial Day is an American holiday, observed on the last Monday of May, honoring the men and women who died while serving in the U.S. military. Memorial Day 2023 will occur on Monday, May 29.

Lets all take a moment, remember, and give thanks to those who bravely served our country as we are all enjoying our hot dogs and beer this year!



Boating 101

Staying safe on the lake isn't rocket science! Please keep in mind these important rules as we are enjoying our lake this year!

For Additional Educational Resources Visit:
www.boat-ed.com/michigan

Travel on the lake must be done in a counter clockwise direction

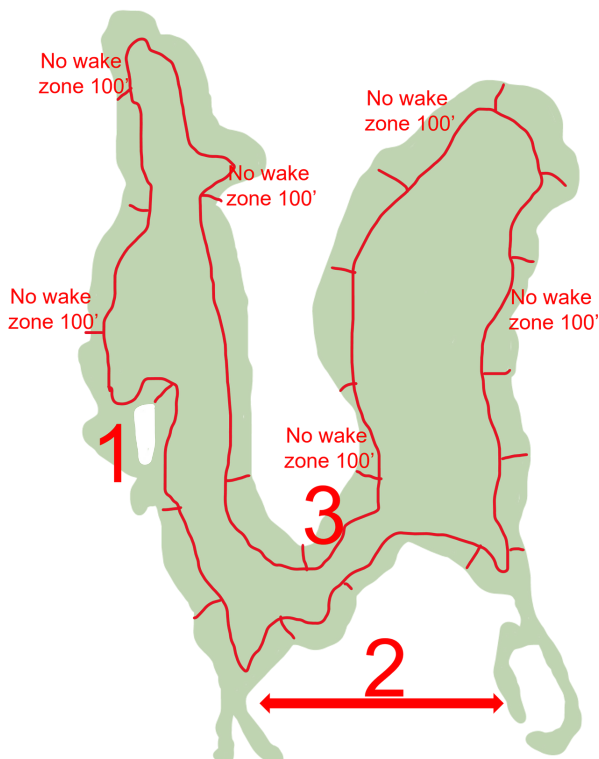
If you are traveling fast enough to create the smallest of wakes, you must stay at least 100 feet from the shore, other and all boats, & rafts

If your boat creates a wake, you have a legal responsibility for any and all damages it may have created. Please be aware, courteous, and kind at all times and maintain distance from the shoreline

An observer, or "spotter" must be within your watercraft AND the addition of the rope length must be calculated into the 100 foot rule above

Wave runners and/or Jetskis (PWCs) should not cross within 150 feet behind another vessel unless you are at a no wake speed. You must have a boaters certificate if you were born after December 31, 1978

Every motorized watercraft must have a USGC approved life jacket for every person on board, along with a throwable device, a horn, fire extinguisher and a valid registration



1. There is no wake permitted behind the island.

2. There is no wake permitted in the channels.

3. The waterway near the tip of the peninsula is perhaps the most dangerous area on our lake. Due to its narrowness, it isn't legally possible in most instances to go more than two boats wide. Please approach this area with caution. If it already has more than one boat wide, make an adjustment.

Any time you are in danger of encroaching on the 100' clearance rule, slow down and wait or safely steer elsewhere.

MIXED BERRY SLAB PIE

Mixed Berry Slab Pie is a great dessert for summer cookouts and holiday gatherings. Fresh berries in a quick and easy Jello glaze is a surefire hit.

PREP TIME 15 minutes COOK TIME 15 minutes ADDITIONAL TIME 4 hours TOTAL TIME 4 hours 30 minutes

INGREDIENTS

2 Pie Crusts (unbaked), homemade or refrigerated
6 ounce box strawberry Jello
1 ½ cups granulated sugar
⅓ cup cornstarch
12 ounces Sprite or water
1 pound fresh strawberries
10 ounces fresh blueberries
6 ounces fresh blackberries
8 ounces Cool Whip, optional garnish

INSTRUCTIONS

Preheat oven to 375°.
Press pie crusts into a rimmed baking sheet (18 x 13 x 1). Piece it together if needed, pressing seams together, covering the bottom and up the sides about half way.
Prick crust with a fork and bake for 12- 15 minutes or until lightly browned.
Remove to a wire rack to cool to room temperature.
While the crust is baking, prepare the glaze. Add Jello, sugar, cornstarch and Sprite to a saucepan. Whisk together and cook over medium heat, bringing mixture to a low boil. When glaze is thickened, remove from heat and set aside. Cool to room temperature.
Remove the tops and slice the strawberries.
Layer strawberries, blueberries and blackberries over the crust.
Spoon glaze over the berries.
Refrigerate until glaze is set, about 4 hours or overnight.
Garnish with cool whip if desired.
Slice and serve.

Rockin'
Recipes

Watermelon Sangria

Watermelon Sangria is a refreshing summer cocktail made with fresh watermelon, lime juice, and white wine to create a festive, bright, and light cocktail.

INGREDIENTS

- Produce
- 1 pint Blueberries
 - 7 cups Watermelon, fresh
- Condiments
- 1/4 cup Lime juice, fresh
- Beer, Wine & Liquor
- 1/4 cup Triple sec
 - 1 bottle White wine, dry
- Liquids
- 1 liter Seltzer water, plain

INSTRUCTIONS

Blend 7 cups of watermelon until smooth. Strain through a mesh strainer to remove any seeds or pulp, reserving the juice.
Add fresh watermelon juice, lime juice, triple sec and white wine to large pitcher. Stir to incorporate.
Chill for 2-4 hours.
Before serving, stir again. Fill a glass with ice. Pour in the watermelon mixture until the glass is 2/3rds of the way full. Top off the glass with chilled seltzer water.
Garnish with fresh blueberries and watermelon stars if desired.





SHAVEHEAD LIVING

Meet the Downing Family



Q. What brought your family to Shavehead Lake and how long have you been here?

A. Mike Downing is a 3rd generation on Shavehead and has been on the lake for 43 years.

Q. Who are the members of your family?

A. Family Members are Mike, Jessica, Daughter Myka (14) and Son Marin(12)

Q. What's the best thing about being on the lake?

A. The best thing about being on the lake is making memories with our children.

Q. What's your least favorite thing to do at the lake?

A. We do not have too many least favorite things on the lake..other than picking up goose poop! Ha!

Q. What's the ideal way to spend an open weekend?

A. The ideal way to spend an open weekend is boat rides , water activities, s'mores by the fire and making memories with friends and family.

Q. Does everyone in your family swim in the lake?

A. We all enjoying swimming in lake! It's beautiful clear water! On the perfect summer day it's looks like the Caribbean.

Q. What would you like everyone to know about your family?

A. The Downing Family started coming to the lake in 1961. Mike's grandfather Jack Downing was the first to have a home on Shavehead lake. Followed by his Father, Jeff Downing. And now Mike. Building our home in 2016 has been a dream come true.

2023 SLA Board Members



- Phil Plaia-South Side, (574)-292-6818**
- Jack DeLee, NW Cove, Treasurer (574)-220-3168**
- Dani Finch, Peninsula, (619) 618-5223**
- Ross Gableman, West Side, Secretary (517) 230-4133**
- Chris Geyer, West Side, Vice Chairman (574) 276-8297**
- Dominic Grescowle, East Side (517) 214-2412**
- Ray Kiendl, West Side (574) 370-2382**
- Jody Landis, East Side (574) 370-4152**
- Michele Lucchese, East Side (574) 596-7941**
- Brittany Marlow, South Side, Chairman (574) 361-3470**
- Stephanie Hendricks, South Side (574) 370-3536**
- Kathy Wilson, Peninsula (619) 301-8410**



2023 Meeting dates:

- June 10**
- July 8**
- August 19**
- September 9**

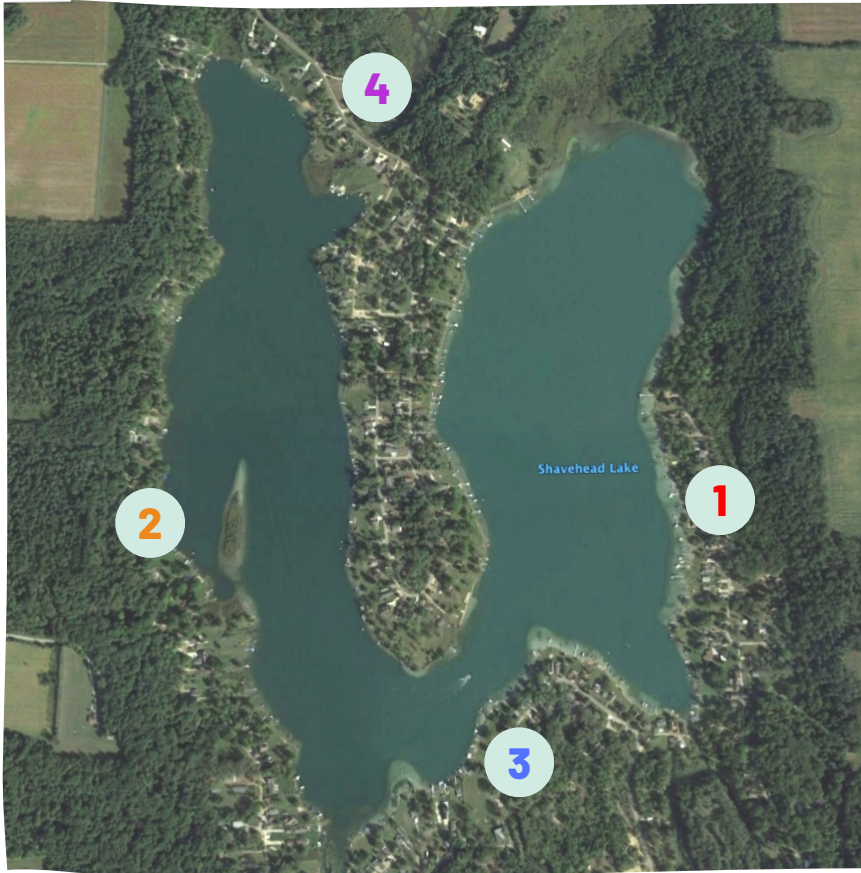
Nature Around The Lake



The Mitchell's satyr butterfly, according to the Michigan Department of Natural Resources, is "one of the world's rarest butterflies," and is found in only about 13 locations, all of which are in Michigan and Indiana. It lives only in prairie fens, a unique wetland ecosystem occurring in glaciated regions of the upper Midwest (such as southern MI), and lays its eggs on native sedges that are threatened by invasives, like cattails. As prairie fens have been drained and developed for agricultural or residential use, the Mitchell's satyr has been disappearing, too.

Camp Friedenswald is fortunate to host a Mitchell's satyr population in the fen here, and is working with several partners on a conservation plan. Habitat conservation is key, and requires long-range vision. Be sure to keep on the lookout during your next hike!

Excerpt from Environmental Stewardship
Camp Friedenswald Blog
December 12, 2017 by Susan Huser



AEDs Around the Lake

What is an AED??



An automated external defibrillator or automatic electronic defibrillator (AED) is a portable electronic device that automatically diagnoses the life-threatening cardiac arrhythmias of ventricular fibrillation (VF) and pulseless ventricular tachycardia, and is able to treat them through defibrillation, the application of electricity which stops the arrhythmia, allowing the heart to re-establish an effective rhythm.

Three AED units, with both adult and pediatric pads, have been installed around the lake. There is a fourth location in the Camp's dining hall. We are planning to add another lakeside location in the coming months. The budget is \$5,000 for this final unit. You will find a line item in this year's membership form dedicated to this project.

Thank you to the first responders who have allowed the installation and maintenance of these units at their homes: Jody Landis, RN, Dr. Wes Marks and Dr. Mary Harder, and Josh Hendricks, EMT.

For more information please visit Zoll.com

East: Roadside -The Landis Residence

65680 Lakeview Drive Vandalia, MI 49095

West: Roadside -The Marks/Harder Residence

65633 North Drive Cassopolis, MI 49031

South: Lakeside -The Hendricks' Boat House

66010 Joseph Street Vandalia, MI 49095

North: Camp Friedenswald Dining Hall

15406 Watercress Drive Cassopolis, MI 49031



Die-Off of Cisco, Coregonus artedi, and a Path Forward

Late August, in the North East cove, an abundance of dead fish were seen floating on the lake's surface. Association members were made aware and it was confirmed that the fish were Cisco. Cisco are a state threatened species that has been extirpated from many inland lakes as a result of habitat degradation and nutrient inputs. In fact, of Michigan's 11,000 inland lakes, less than 200 support the native Cisco species. As with the canary in the coal mine, the health of Cisco in our inland lakes acts as an early warning system for the fish, wildlife, and people dependent on Michigan's waters. In February the SLA board met with ecologists from Ecosystems Connections Institute (ECI) out of Denver, Indiana. The SLA shared our years of water quality data with the ecologists. After our meeting, they proposed a one year partnership. From their scope of work:

The pointed challenge for Shavehead Lake and most glacial lakes in the Midwest is to have an accurate understanding of the amounts of nutrients and sediment entering and leaving the lake (Nutrient and Water Budget). This understanding is foundational to improve or maintain trophic status of the lake through a holistic strategic ecological initiative. In the case of Shavehead Lake, there is a specific biological target (Cisco) that depends on a positive heterograde Dissolved Oxygen distribution during the late summer months. Data suggests Shavehead Lake has lost this heterograde dissolved oxygen distribution during late summer and Cisco populations have declined. This decline in oxygen has resulted in Cisco die-offs in the summer of 2022. The cumulation of these observations indicate that Shavehead Lake is shifting in trophic state from mesotrophic to a more eutrophic with frequent algal blooms in the summer. Restoration of Shavehead Lake depends on data sufficient to illuminate a relevant and pragmatic pathway. Nature is dynamic and no two lakes are the same. A robust experimental design is necessary to establish defensible ecological benchmarks that will be useful to track ecological patterns and trends or to assess the efficacy of shifts in conservation efforts across watersheds. In addition to this scientific approach, is Social Science-side part. An approach rooted in science will cultivate and nurture productive partnerships through sharing information, listening, learning, and exploring a collaborative pathway to achieve project objectives at the highest professional level. Aside from use of robust science as the foundation for ecosystem assessment and restoration, we at ECI value highly productive and personable partnerships. It is this human connection that produces high quality outcomes.

ECI is working to make our project competitive to the Michigan Fisheries Habitat Grant and feels it could be a good candidate. If granted, the \$96,000 project could be 100% covered by the grant.

However, the grant is dependent on help from our lake community. Volunteers will be needed to collect samples at 6 locations, 3 times a week from April through June of 2024 then once weekly from July-December 2024 and January – March 2025.

We realize this is a large ask but are confident it will provide the necessary data to decipher the next steps. Volunteers need to be confirmed by the end of summer. If this is something you may be interested in, please contact shaveheadlakeassociation@gmail.com.

A special meeting with ecologist, Kyle Boone, of ECI will be held on June 10 at 11 a.m., following the SLA meeting. Please plan to attend if you have any questions about the project, grant or volunteer commitments.

The SLA is thrilled that the ecologists at ECI are interested in working with our lake. Their passion for projects such as ours is palpable. Visit www.ecosystemsconnections.com to find out more about their work.

Pooch Parade

This Saturday, May 27th, we will hold our annual Pooch Parade. All dogs are invited to parade around the peninsula vying for awards such as "Longest Tongue", "Fluffiest Tail", the "Dog/Owner Lookalike Award" and many more. Come as you are or in costume for this fun morning of canine camaraderie.

Registration will begin at 9:30 at Harmon Park. The dogs will parade to the end of the peninsula and back to the park beginning at 10 a.m. Donations will be collected to give to the Cass County Animal Control. All dogs will leave with a prize!

Music on the Lake

New to 2023 is our "Music on the Lake" event series. Due to your gracious donations, the SLA is sponsoring three musical events throughout the Summer. Our first concert will be Small Paul and The Difference on June 3rd hosted at the Marlow residence in the SE cove. The event, sponsored by the SLA, is open to the Shavehead community to enjoy. Feel free to come on shore and dance or enjoy from your boat. As always, make sure you have permission from any neighbor before you park your boat or other vessel on their property. If you are a music lover, dancer, or just someone who loves having a good time—consider giving to this new fund at www.shaveheadlake.com.

KIDS CARNIVAL

09.27th
ADMIT ONE

On Saturday, June 17th we will be holding our annual Kids Carnival! This is a special day for the youth of Shavehead Lake, courtesy of the SLA. From 11-1 p.m. kids can play various games, create fun crafts, snack and win prizes! In addition to a bounce house and slide, there will also be a joust arena for kids and adults alike! This event requires a lot of volunteers. If you would be interested in helping with the days activities or have any special talents (like balloon contorting or even a clown?!) please contact Brittany Marlow at 574-361-3470.

1st Annual SLPA Corn Hole and Euchre Tournament

Saturday June 24th 6-9PM

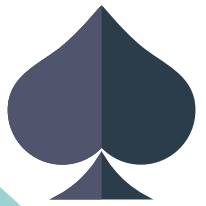
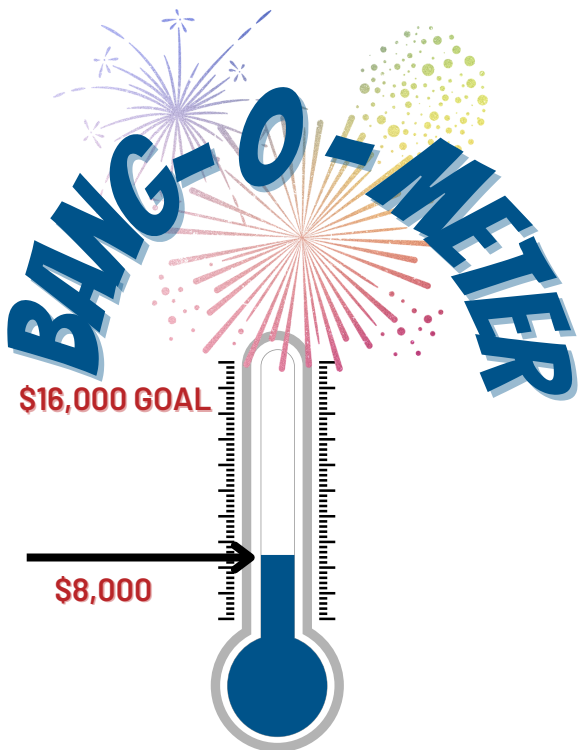
Location 65451 E Peninsula Dr.

Come and join us and show off your Corn Hole skills. Whether you're a skilled corn hole player or a beginner you will be sure to have fun.

Corn Hole Tournament - We will have 12 games going at the same time using a bracket style competition with the winners moving on. You can sign up as a team of 2.

Euchre Tournament - will be Round-Robin style with games lasting 15 minutes. You will switch partners every 15 minutes.

To enter, visit Shavehead Lake Facebook page with details and be on the lookout for an upcoming email.



So Where Does All The Money Go?



2023 May Treasurer's Report

General Fund	\$47,086.68
Fireworks Fund	\$8,589.87
Goosebusters	\$2,083.84
Aquatic Weed Control	\$8,161.69
Poker Run Total - recorded in General Fun Ledger	-\$1,630.00
AED Fund	-\$4,490.02
Fall Bash	\$20.00
Music on the Lake	\$790.00
TOTAL ACCOUNT BALANCE = \$60,612.06	

Invasive Weed Update

In 2022 Porter Township created a Governmental Lake Board (GLB) to oversee the treatment of aquatic invasive weeds in Shavehead Lake. The GLB is comprised of the County Commissioner (Skip Dyes), the Drain Commissioner, two representatives of Porter Township appointed by the township (Dave Nagy and Pat Williams) and a Shavehead Lake resident appointed by the GLB board (Ross Gableman). The GLB has contracted Progressive AE to monitor and treat weeds for the length of the 5 year treatment plan. In the past we have identified beds of Eurasian Milfoil and Starry Stonewort. The SLA has been able to treat some of these beds, but not all. The GLB will have the ability to treat all of them. Progressive AE will be out on May 31 to do a vegetation survey. The intention of the survey is to identify and quantify the current invasive weed beds. These results will be available at the next SLA meeting. Once that date has been decided, an email will be sent. If interested, make sure your contact info is up to date by visiting www.shavheadlake.com.

Camp Friedenswald
SUMMER 2023

- June 11-16: High School Camp (GRADES 9-12)
- June 18-23: Primary & Pre-Jr Camp (GRADES 2-4)
- June 25-30: Junior High Camp (GRADES 7-8)
- July 2-7: Junior Camp (GRADES 5-6)
- July 10-14: Family Camp 1
- July 17-21: Family Camp 2
- July 24-28: Family Camp 3

CAMP FRIEDENSWALD



Have an idea or something you'd like to see in our newsletter?

Email your thoughts and pictures to Kristen Wiley at kdwiley0501@yahoo.com

Are You In "The Know"

www.shaveheadlake.com is a great resource for all things on the lake.

At ShaveheadLake.com you can review the latest events and happenings and contribute to our initiatives.

Join SLA | Renew your dues | Purchase merchandise

Thank you to our webmaster, Shelly DeMott, for keeping this up to date!



Shavehead Lake 2023

You can now purchase your items online in 3 easy steps:

1. Scan the QR code or go online to <https://shaveheadlake2023.itemorder.com/>
2. Choose your items and add them to your cart
3. Securely checkout with your credit card

Online Store Deadline: **Sunday June 4th, 2023 (11:59pm CDT)**

District Tri-Blend T- Shirt 1



5 Colors

District Tri-Blend T- Shirt 2



10 Colors

District The Concert Tank 1



3 Colors

\$22.00 \$22.00 \$22.00 \$22.00

District The Concert Tank 2



7 Colors

UPF 50+ Paragon Islander Performance T-Shirt 1



\$22.00

UPF 50+ Paragon Islander Performance T-Shirt 2



\$24.00

\$24.00

District Tri-Blend 3/4-Sleeve Raglan T-Shirt 1



7 Color

\$26.00 \$26.00

District Tri-Blend 3/4-Sleeve Raglan T-Shirt 2



\$26.00

District Tri-Blend Long Sleeve T-Shirt 1



3 Colors

\$25.00 \$25.00

District Tri-Blend Long Sleeve T-Shirt 2



7 Colors

UPF 50+ Paragon Islander Long



\$28.00

UPF 50+ Paragon Islander Long



\$28.00

\$28.00

District Re-Fleece Hoodie 1



2 Colors

\$38.00

District Re-Fleece Hoodie 2



5 Colors

\$38.00

Bella + Canvas Shoulder Sweatshirt 1



4 Colors

\$42.00

Bella + Canvas Shoulder Sweatshirt 2



10 Colors

\$42.00

UPF 50+ Paragon Vail Performance Fleece Hoodie 1



4 Colors

\$48.00

UPF 50+ Paragon Vail Performance Fleece Hoodie 2



6 Colors

\$48.00

Questions?
Jon Krysa
219-462-4412
onlinesales@teamblythes.com
<http://www.teamblythes.com>



Dr Emily Mitchell, DO • 574.333.3488

eliteaestheticsmichiana.com

*Thank
You*

TO ALL OF OUR ADVERTISERS!

If you're interested in advertising, please contact

Kristen Wiley: kdwiley0501@yahoo.com

MILLS
MEAT & GROCERY

69564 SUNSET BLVD, UNION, MI 49130

TK STEEL inc.

57433 Nagy Drive
Elkhart, IN 46517
tksteelinc.com
574-293-2907

DOWN TO EARTH



GOOD THINGS FOR YOU
SINCE 1994



Organic vitamins & supplements, CBD, natural health & beauty products, organic coffee, organic wine & beer, locally grown produce, allergy friendly foods, ALL organic juice & smoothie bar!

Present this coupon to get \$5 off your purchase!



14678 State Road 23 East
Granger, IN 46530
(574)271-1497

SCOTT KNEPPLE

Owner
Stone Seawalls
269-476-9327
Concrete Work
All phase construction
Landscaping
Light excavating

BLUE SKY BUILDERS

30 years experience
Painting and Pressure washing



Exclusively serving sellers & buyers of Michigan Lake property.

SELL WITH PAUL

Paul is Southwest Michigan's **number one lake property Realtor** since 2012. He employs a proven digital marketing system that targets Chicago and local buyers to your home, and has expertise in evaluating the best offer for your home in today's unique market, while generating the highest return on your investment.



PAUL DELANO
Owner / Lakefront Broker
269.445.8877
Paul@TheLakeLife.com

BUY WITH PEGGY AND MATT

Agents Peggy Gonyon and Matt DeLano focus on one area of realty: **they only serve lake home buyers.** Peggy and Matt possess extensive knowledge of Southwest Michigan's lakes and lake communities, and have the network and the know-how to position your offer above the competition.



PEGGY GONYON
Lakefront Buyer Specialist
269.445.8876
Peggy@TheLakeLife.com



MATT DELANO
Lakefront Buyer Specialist
269.445.8872
Matt@TheLakeLife.com

The
LAKE LIFE
REALTY GROUP
TheLakeLife.com

69150 Sunset Boulevard • Union, Michigan 49130

Information provided by the Southwest Michigan Association of Realtors, with respect to sales of inland lake properties in Cass, Berrien, St Joseph Counties, MI, from 1.1.12 to 1.31.23.
When an agent represents the buyer and seller, 200% credit is granted. Results are for individual Realtors and exclude Realtors that group results through a team.



SCOTT KNEPPLE

Owner



Able & Willing Landscaping

Complete Landscaping Services

65324 Eby Road
Cassopolis, Michigan 49031
616-476-9327

"Your Hometown Printer



Since 1979
Printers PLUS

ELKHART, INDIANA

DIGITAL FULL COLOR & OFFSET PRINTING
COPY SERVICE • FAX SERVICE • LAMINATING

2111 Cassopolis St. | Elkhart, IN 46514

574/264.4114

orders@printerspluselkhart.com

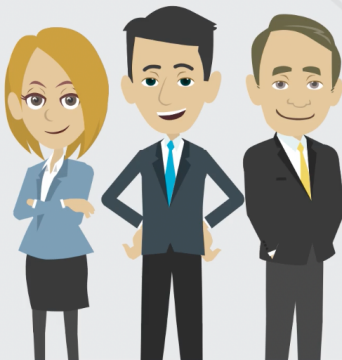
like us on Facebook



Photo courtesy of Adam Aufdencamp



Locally owned independent wealth management firm



FINANCIAL PARTNERS INC.

1-574-264-0621

www.financialpartnerinc.com

Over 50 years of combined experience

NURSE PRACTITIONER
SERVICES



HOUSE CALLS

PRIMARY CARE

AGE 65+

MEDICARE AND MEDICARE ADVANTAGE



OFFICE SERVICES

FUNCTIONAL MEDICINE

WEIGHT LOSS

IV HYDRATION

VITAMIN INJECTIONS

AGE 18+

CASH PAYMENT



STEPHANIE KERTES, NP-C

WWW.NPSWELLNESS.COM

1751 EAST BRISTOL STREET

ELKHART, INDIANA